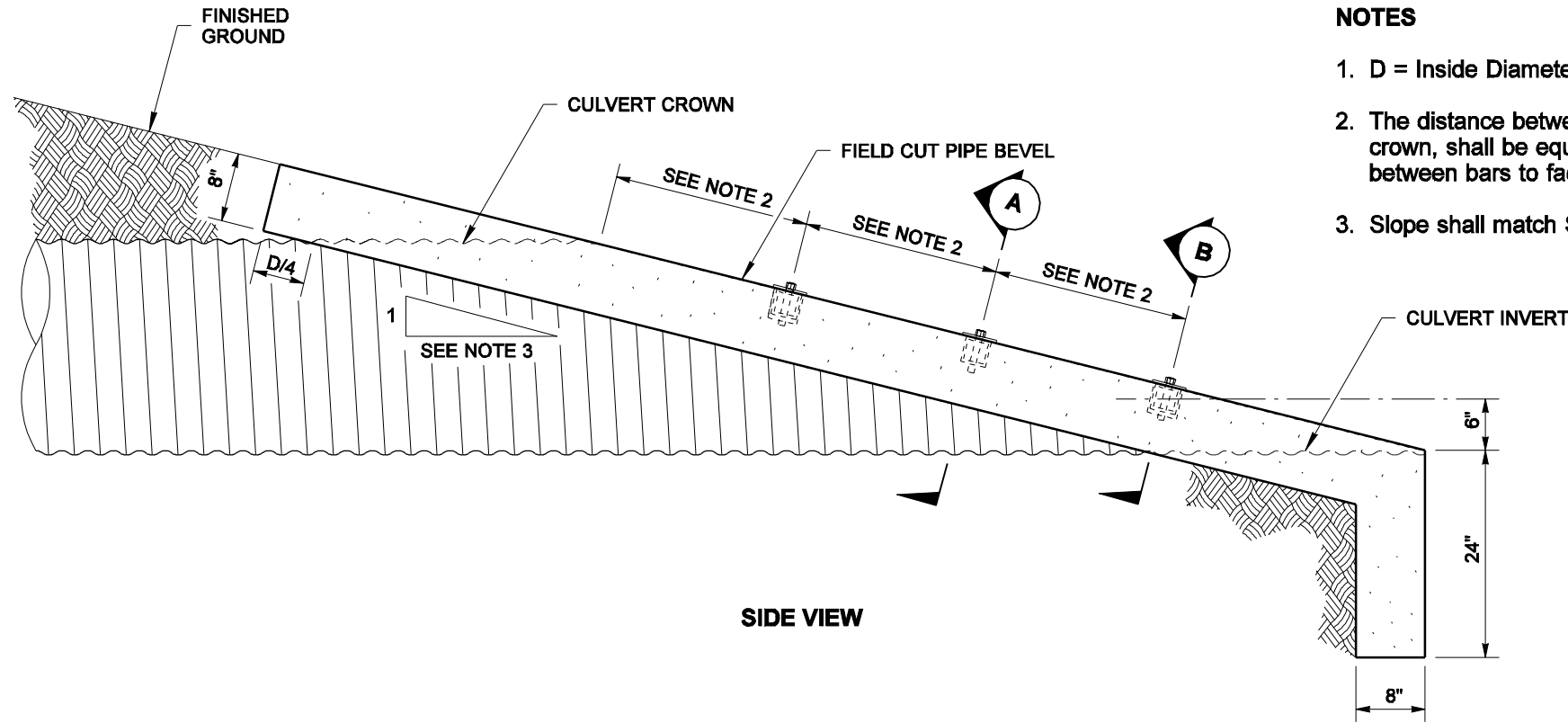


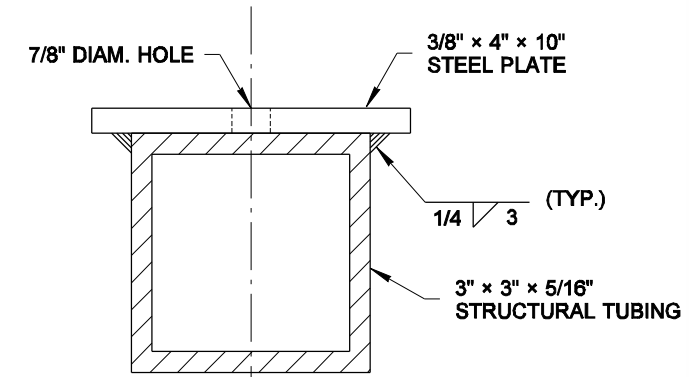
**FRONT VIEW**



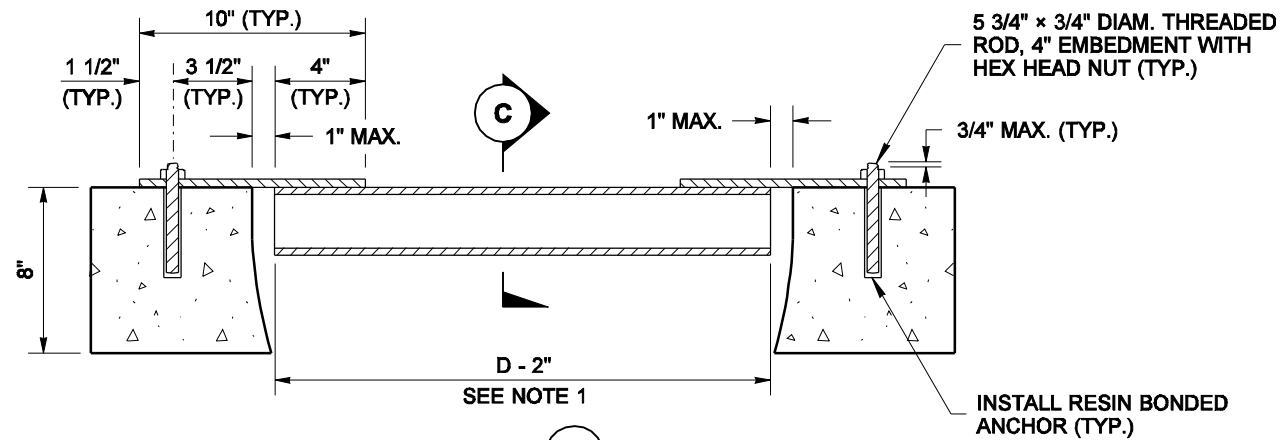
**SIDE VIEW**

**NOTES**

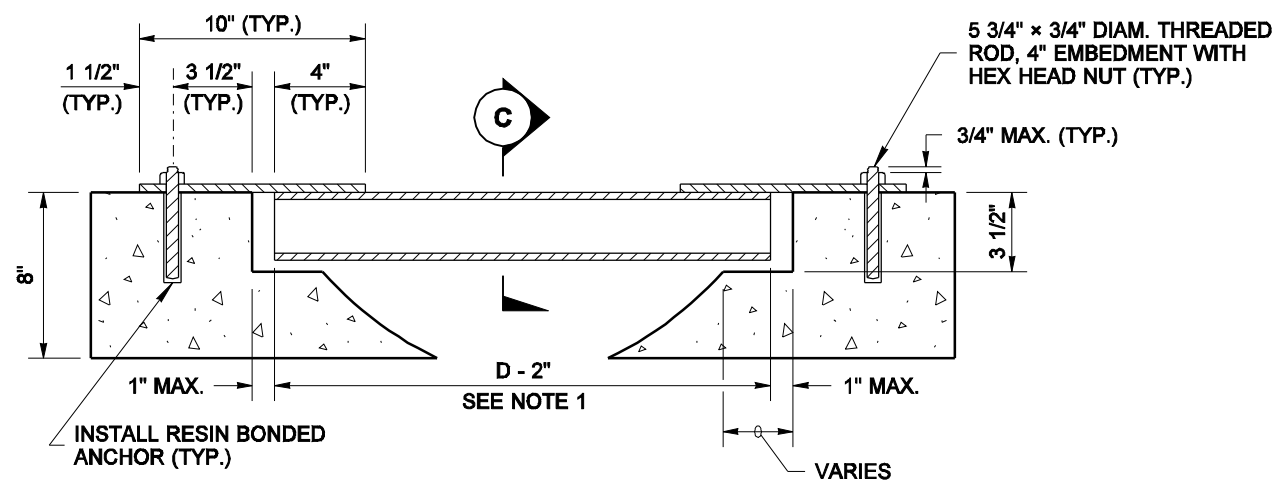
1. D = Inside Diameter of Culvert Pipe, or Pipe Arch Span Width, 36" maximum.
2. The distance between the safety bars, and between the top bar and the culvert crown, shall be equal spaces of no more than 24". The distance may vary ±1" between bars to facilitate placement.
3. Slope shall match Side Slope; 6H:1V preferred, not steeper than 4H:1V.



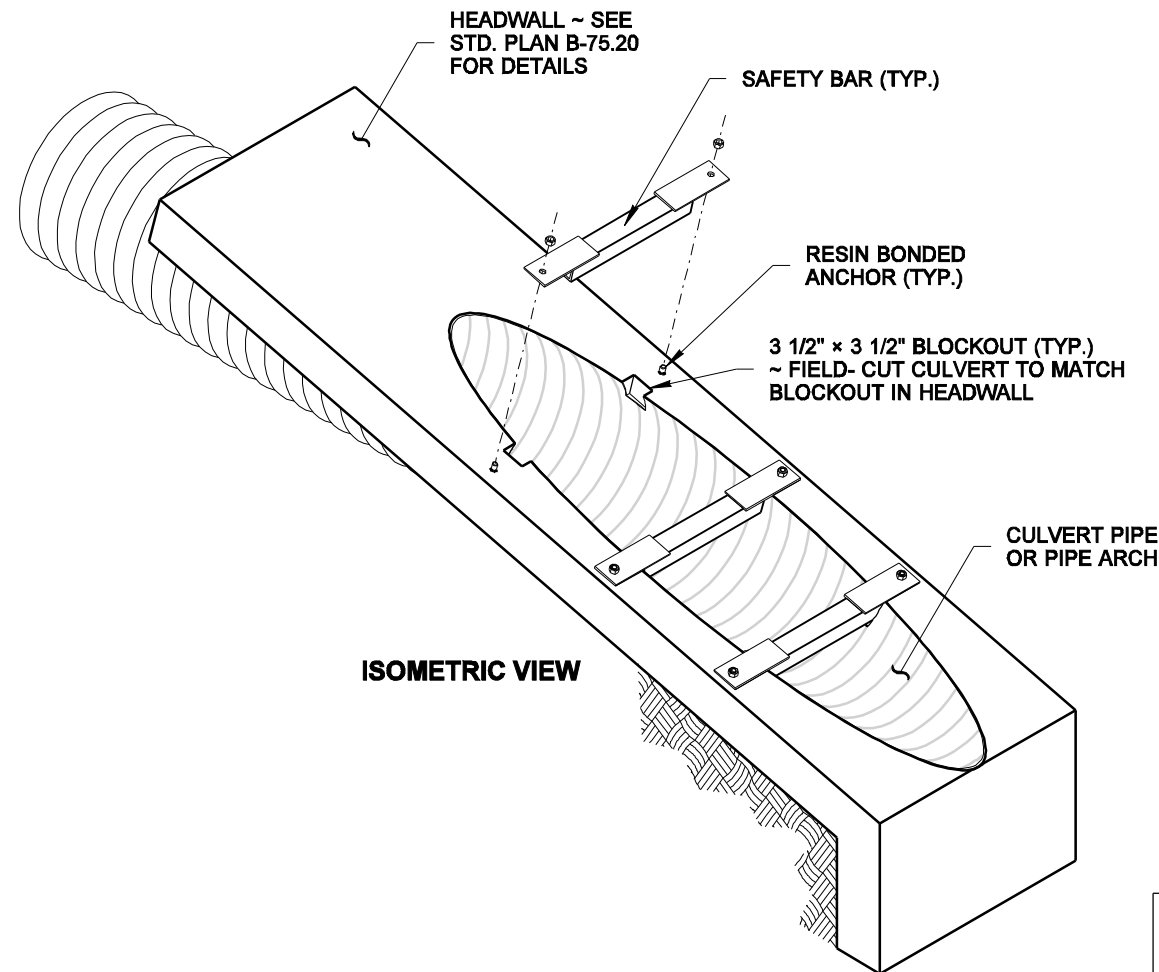
**SECTION C**



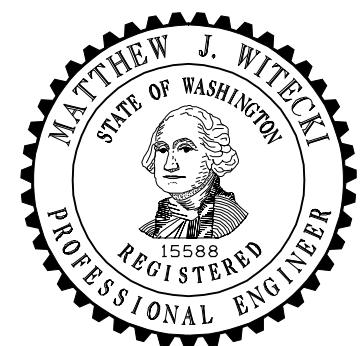
**SECTION A**



**SECTION B**



**ISOMETRIC VIEW**



EXPIRES JULY 1, 2007

**TYPE 2 SAFETY BARS FOR  
CULVERT PIPE OR PIPE  
ARCH (ON CROSS ROAD)  
STANDARD PLAN B-75.60-00**

SHEET 1 OF 1 SHEET

APPROVED FOR PUBLICATION

**Harold J. Peterfeso** 06-08-06

STATE DESIGN ENGINEER DATE



NOTE: THIS PLAN IS NOT A LEGAL ENGINEERING DOCUMENT BUT AN ELECTRONIC DUPLICATE. THE ORIGINAL, SIGNED BY THE ENGINEER AND APPROVED FOR PUBLICATION, IS KEPT ON FILE AT THE WASHINGTON STATE DEPARTMENT OF TRANSPORTATION. A COPY MAY BE OBTAINED UPON REQUEST.